

Operating Instructions

Parts List



Manual Scissor Lift Pallet Truck

Note: Operator MUST read and understand this operating instructions before use this Hand Scissor Lift.

Thank you for using this hand scissors lift. Your scissors lift is made of high quality steel and was designed to give you a durable, reliable and easy to use product. For your safety and correct operation, please carefully read this instruction before using it.

NOTE: All of the information reported herein is based on data available at the moment of printing. The factory reserves the right to modify its own products at any moment without notice and incurring in any sanction. So, it is suggested to always verify possible updates.

1 Specification

Capacity	1000 kg
Max. Fork Height	800 mm
Min. Fork Height	85 ± 2mm
Fork Length	1170 mm
Fork Width(outside)	540 / 685mm
Fork Width(inside)	220 / 365mm

2 Safety Instruction

1. Operator should read all warning signs and instructions here and on the pallet truck before using this truck.
2. The scissors lift should be used in accordance with instructions handbook.
3. Do not operate a pallet truck unless you have checked its condition. Give special attention to the wheels and rollers, the draw-bar unit, the fork unit, the lever plat, etc.
4. Don't put the hand or foot under the fork at any time.
5. Don't work on the slope surface.
6. Quick lifting is prohibited for loads of more than 300kgs. Any manipulation of the pressure relief valve is strictly prohibited. All assembling, adjusting and maintenance shall only be done by industrial mechanics trained people. These people must be familiar with all safety regulations of European or national where the item is in use relating to the operation and maintenance of pedestrian controlled industrial trucks.
7. Load should be put on the fork center. Side-load is strictly prohibited.
8. The scissors lift shall not be used to transport persons.
9. It is recommended to the driver to wear security shoes.
10. No modifications shall be carried out which adversely affect the compliance of the scissors lift with EN1757-4.
11. At others special condition or place, the operator should be carefully to operate the pallet truck.

3 Installation & Adjustment

If you have purchased a wooden box of pallet truck, some assembly is required. Certainly, you need some tools, a hammer, a pliers, a spanner, etc; and some parts, one axle with hole (105), two elastic pins (106)(**Note one is in the axle (105)**), these parts are putted in a plastic bag, which is putted into the draw-bar. **NOTE: The number of draw-bar and pump should be the same.**

A. Handle installation

When attaching the handle, you had better squat just behind the pallet truck. Then you:

- 1) Insert the draw-bar onto the piston(301N), then use a hammer to insert the axle with hole (105) into the hydraulic pump and draw-bar **from the right to left.**
- 2) Let control handle (117) to the '**LOWER**' position, then pass the adjusting nut (104), adjusting bolt (103) and chain (102) through the hole of axle (105) with your hand.
- 3) Press the draw-bar (110N) down, take away the pin which is used to prevent the piston (301N) escaping.
- 4) Let the control handle (117) on '**RAISE**' position, then raise the lever plate (319) with the pin and insert the adjusting bolt (103) into the front slot of lever plate (319), note to keep the adjusting nut (104) on the under side of the lever plate.
- 5) Use a hammer to tap another elastic pin (106) into the axle with hole (105).

The draw-bar is now assembled to the pump.

B. Handle adjustment

1) There are 3 different positions with different functions for the Control Handle (117).

Position I: Quick lifting for fork.

Position II: Slow lifting for fork.

Position III: Descending for fork.

2) Test different functions by putting the Handle(117) in 3 different positions respectively.

If it does not function properly, then adjust the Nut (104) or Adjusting Bolt (318) by following process.

Problems	Turning direction of Nut (104)	Turning direction of Bolt (318)
Fork not lifted up	- (counter-clockwise)	- (counter-clockwise)
Fork not lowering down	+ (clockwise)	+ (clockwise)
Slow lifting no function	+ (clockwise)	+ (clockwise)
Quick lifting no function	- (counter-clockwise)	- counter-clockwise)

3) How to release the air from the pump.

When pushing the draw-bar down, the fork can't be lifted instantly. Please loosen the Screw (303N) on the pump while pushing the handle down slowly to release the air from the pump. Then tighten the screw.

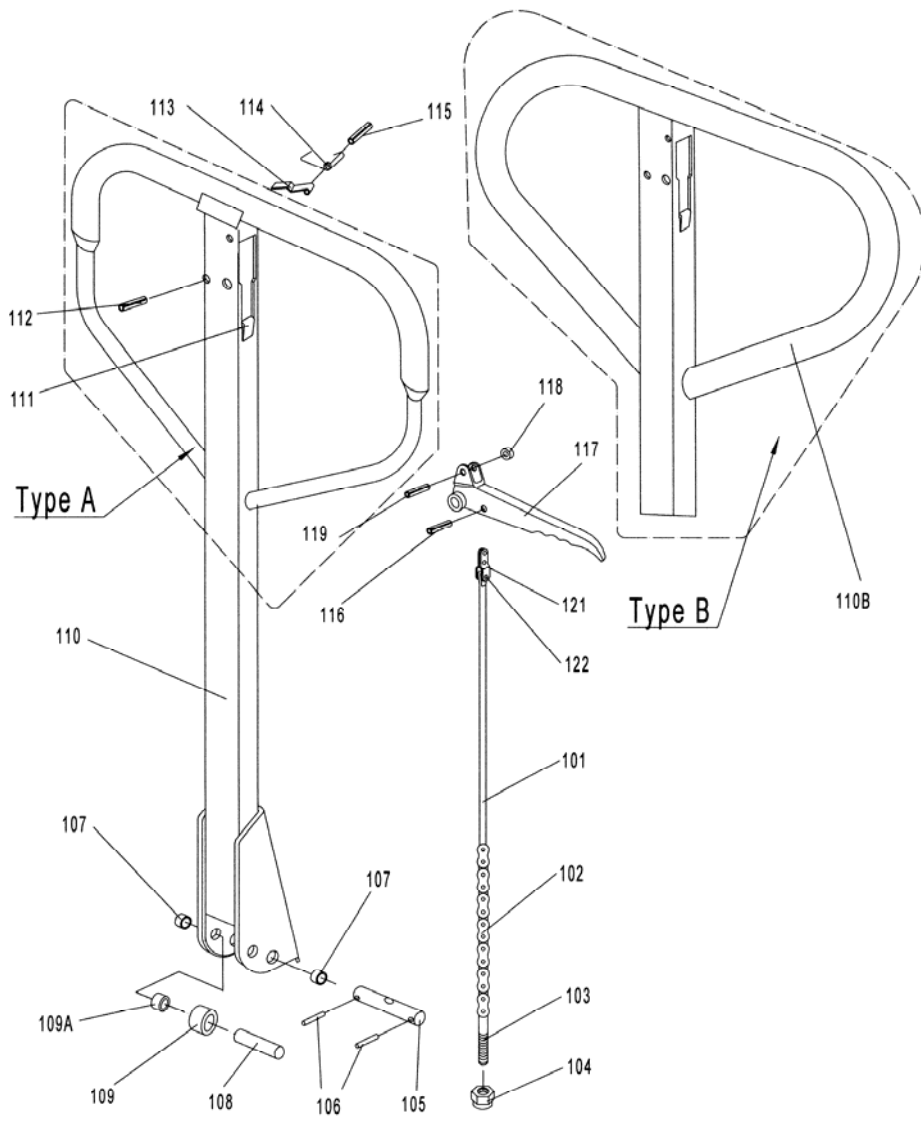
4) When to add oil

If the fork can't be pumped up to its rated highest position, you may have to add hydraulic oil into the oil tank. The hydraulic fluid to be used must have a quality of ISO VG32 or equivalence, its viscosity should be 32cSt at 40°C. Mixing of different fluids is prohibited!

4 TROUBLE SHOOTING GUIDE

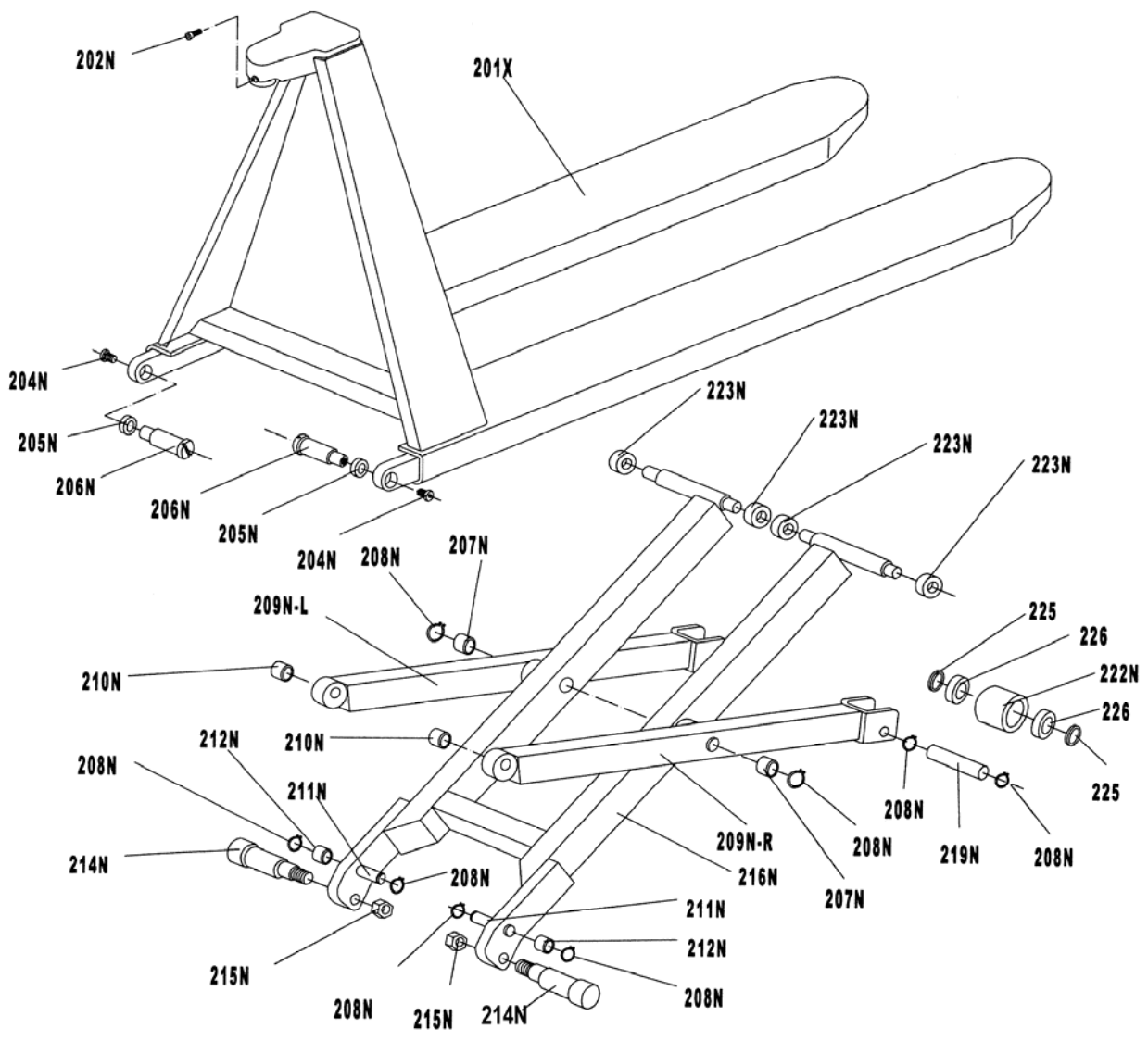
No.	Symptom	Possible cause	Aliments
1	Fork can not be pumped up	1. Low oil level in oil tank. 2. Exist air in the hydraulic system. 3. The adjusting bolt (318) or adjusting nut (104) is not adjusted properly.	1. Add proper hydraulic oil. 2. Fast operating the handle for several times. Bleed the system. 3. Adjust it (See item 3).
2	Fork can't be released down	1. Fork blocked. 2. The adjusting bolt (318) or adjusting nut (104) not adjusted properly.	1. Check and remove the block. 2. Adjust it properly.(See item 3)
3	Fork can't be pumped up to rated highest position.	Oil is not enough.	Add hydraulic oil.
4	Fork lifting speed has no difference between position I and position II of control handle.	The adjusting nut (104) or the adjusting bolt (318) are not adjusted properly.	Adjust it. (See item 3)

NOTE: DO NOT ATTEMPT TO REPAIR THE PALLET TRUCK UNLESS YOU ARE TRAINED AND AUTHORIZED TO DO SO.

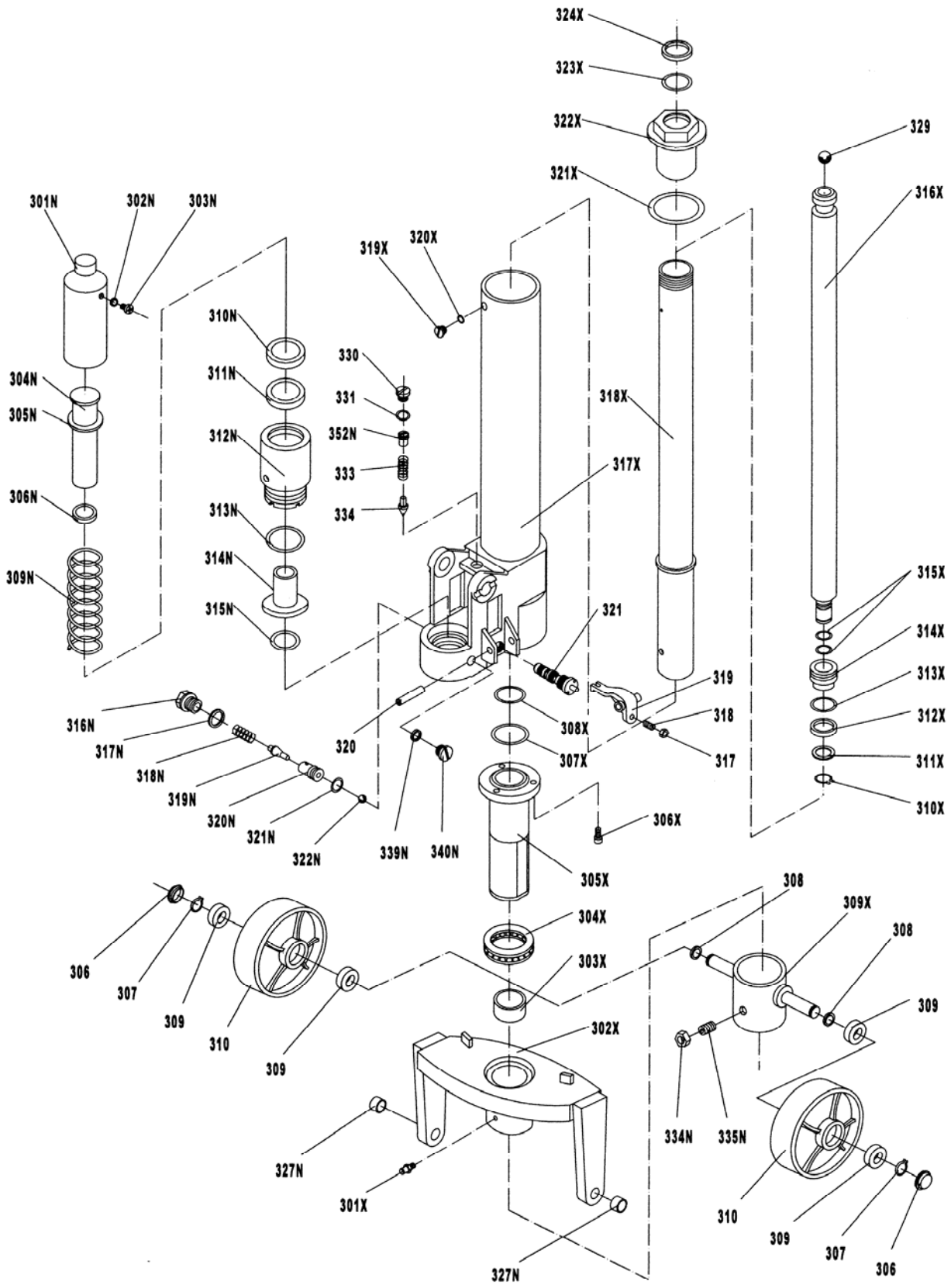


LIST of DRAW-BAR

No.	Description	Qty.	Remark
101	Release Rod	1	
102	Chain	1	
103	Adjusting Bolt	1	
104	Adjusting Nut	1	
105	Axle with Hole	1	
106	Elastic Pin	2	
107	Bushing	2	
108	Roller Pin	1	
109	Pressure Roller	1	
109A	Bushing	1	
110	Draw-bar	1	For Type A
110B	Draw-bar	1	For Type B
111	Stop Rubber	1	
112	Elastic Pin	1	
113	Blade Spring	1	
114	Spring	1	
115	Elastic Pin	1	
116	Elastic Pin	1	
117	Control Handle	1	
118	Roller	1	
119	Elastic Pin	1	
121	Pull Board	1	
122	Pin	1	



No.	Description	Qty	Annotations
225	Washer	4	
226	Bearing	4	
201X	Fork Frame	1	
202N	Bolt	1	
204N	Screw	2	
205N	Washer	2	
206N	Pin	2	
207N	Bushing	2	
208N	Locking Ring	10	
209N-L	Left Leg	1	
209N-R	Right Leg	1	
210N	Bushing	2	
211N	Pin	2	
212N	Bushing	2	
214N	Centrifugal Axle	2	
215N	Locking Nut	2	
216N	Inner Leg	1	
219N	Shaft of Roller	2	
222N	Roller	2	
223N	Steel Roller	4	



LIST OF PUMP

No.	Description	Qty	Annotations
306	Dust Cover	2	
307	Locking Ring	2	
309	Bearing	4	
310	Steering Wheel	2	
317	Nut	1	
318	Screw	1	
319	Lever Plate	1	
320	Elastic Pin	1	
321	Valve Cartridge	1	
329	Steel Ball	1	
330	Screw Plug	1	
331	O - Ring	1	
333	Spring	1	
334	Spindle of Safety Valve	1	
301N	Piston for Quick Lifting	1	
302N	Seal Washer	1	
303N	Screw for Deflating	1	
304N	Piston for Slow Lifting	1	
305N	Washer for Spring	1	
306N	Y - Ring	1	
309N	Spring	1	
310N	Dust Ring	1	
311N	Y - Ring	1	
312N	Pump Cylinder for Quick Lifting	1	
313N	O – Ring	1	
314N	Pump Cylinder for Slow Lifting	1	
315N	O - Ring	1	
316N	Screw	1	
317N	Seal Washer	1	
318N	Spring	1	
319N	Spindle of Pump Valve	1	
320N	Seat of Valve	1	
321N	O - Ring	1	
322N	Steel Ball	1	
327N	Bushing	2	
334N	Nut	1	
335N	Screw	1	
339N	Seal Washer	1	
340N	Screw	1	
352N	Adjusting Bolt	1	
301X	Grease Cup	1	
302X	Thrust Plate	1	
303X	Bushing	1	
304X	Bearing	1	
305X	Lower Cylinder	1	
306X	Screw	3	
307X	O - Ring	1	
308X	O - Ring	1	
309X	Holding Site for Wheel	1	
310X	Locking Ring	1	
311X	Washer	1	
312X	Y - Ring	1	

No.	Description	Qty	Annotations
313X	O - Ring	1	
314X	Piston	1	
315X	O - Ring	2	
316X	Piston Rod	1	
317X	Pump Body	1	
318X	Cylinder	1	
319X	Screw	1	
320X	Seal Washer	1	
321X	Seal Washer	1	
322X	Screw Cover	1	
323X	O - Ring	1	
324X	Dust Ring	1	

List of Assembly

No.	Description	List of Assembly
NP-X	Piston Ass'y	310X,311X,312X,313X,314X,315X,316X
NR-X	Load Roller Ass'y	226,222N
NG-X	Steering Wheel Ass'y	310,309
NHD-X	Handle Ass'y	102,103,104,105,106,107,108,109,109A,111,112,113 114,115,116,117,118,119,121,122,101N,110N
NV-X	Seal Kit Ass'y	331,302N,306N,310N,311N,313N,315N,317N,321N,307X,308X 312X,313X,315X,321X,323X,324X
T-X	Valve Cartridge	321
NS-X	Safety Valve Ass'y	330,331,333,334,352N