

Operating Instructions

Parts List



Manual Scissor lift Pallet Truck

Note: Operator MUST read and understand this operating instructions before use this Manual Scissor lift Pallet Truck.

Thank you for using this hand scissors lift. Your scissors lift is made of high quality steel and was designed to give you a durable, reliable and easy to use product. For your safety and correct operation, please carefully read this instruction before using it.

NOTE: All of the information reported herein is based on data available at the moment of printing. The factory reserves the right to modify its own products at any moment without notice and incurring in any sanction. So, it is suggested to always verify possible updates.

1 Specification

Capacity	1000 kg
Max. Fork Height	800 mm
Min. Fork Height	85 ± 2mm
Fork Length	1140 / 1170 mm
Fork Width(outside)	540 / 685mm
Fork Width(inside)	220 / 365mm

2 Safety Instruction

1. Operator should read all warning signs and instructions here and on the pallet truck before using this truck.
2. The scissors lift should be used in accordance with instructions handbook.
3. Do not operate a pallet truck unless you have checked its condition. Give special attention to the wheels and rollers, the draw-bar unit, the fork unit, the lever plat, etc.
4. Don't put the hand or foot under the fork at any time.
5. Don't work on the slope surface.
6. Quick lifting is prohibited for loads of more than 300kgs. Any manipulation of the pressure relief valve is strictly prohibited. All assembling, adjusting and maintenance shall only be done by industrial mechanics trained people. These people must be familiar with all safety regulations of European or national where the item is in use relating to the operation and maintenance of pedestrian controlled industrial trucks.
7. Load should be put on the fork center. Side-load is strictly prohibited.
8. The scissors lift shall not be used to transport persons.
9. It is recommended to the driver to wear security shoes.
10. No modifications shall be carried out which adversely affect the compliance of the scissors lift with EN1757-4.
11. At others special condition or place, the operator should be carefully to operate the pallet truck.

3 Installation & Adjustment

If you have purchased a wooden box of truck, some assembly is required.

NOTE: The number of draw-bar and pump should be the same.

3.1 Handle installation

3.1.1 FOR "TYPE I" PUMP

You need some tools, a hammer, a pliers, a spanner, etc; and some parts, one axle with hole (105), two elastic pins (106)(**Note one is in the axle (105)**), these parts are putted in a plastic bag, which is putted into the draw-bar.

- 3.1.1.1 Insert the draw-bar onto the pump piston (301N), then use a hammer to insert the axle with hole (105) into the hydraulic pump and draw-bar **from the right to left.**
- 3.1.1.2 Let control handle(117) to the '**LOWER**' position, then pass the adjusting nut(104), adjusting bolt(103) and chain(102) through the hole of axle(105) with your hand.
- 3.1.1.3 Press the draw-bar (110, 110B) down, take away the pin that be used to prevent the pump piston be escaped.
- 3.1.1.4 Let the control handle (117) on "**Position I: Quick lifting for fork**", then raise the lever plate (319) with the pin and insert the adjusting bolt(103) into the front slot of lever plate (319), note to keep the adjusting nut (104) on the under side of the lever plate.
- 3.1.1.5 Use a hammer to tap another elastic pin (106) into the axle with hole (105).

The draw-bar is now assembled to the pump.

3.1.2 FOR "TYPE II" PUMP

You need some tools, a hammer, a spanner, etc.

- 3.1.2.1 Remove 3 bolts (D611) from the handle bracket (356N).
- 3.1.2.2 Set handle (D610) on the bracket (356N), notice to allow the chain (D612) and the adjusting bolts (D614) assembly to pass through the hole in the center of the bracket (356N) and shaft (357N).
- 3.1.2.3 Insert the 3 bolts (D611) through the handle into the bracket (356N), then tighten them securely.
- 3.1.2.4 Raise the lever plat (319) and insert the adjusting bolt (D614) into the front slot, keeping the adjusting nut (D615) on the under side of the lever plat (319).

The draw-bar is now assembled to the pump.

3.2 Handle adjustment

- 1) **There are 3 different positions with different functions for the Control Handle (117 or D608).**

Position I: Quick lifting for fork.

Position II: Slow lifting for fork.

Position III: Descending for fork.

- 2) **Test different functions by putting the Handle (117 or D608) in 3 different positions respectively.**

If it does not function properly, then adjust the Nut (104 or D615) or Adjusting Bolt (318) by following process.

Problems	Turning direction of Nut (104 or D615)	Turning direction of Bolt (318)
Fork not lifted up	- (counter-clockwise)	- (counter-clockwise)
Fork not lowering down	+ (clockwise)	+ (clockwise)
Slow lifting no function	+ (clockwise)	+ (clockwise)
Quick lifting no function	- (counter-clockwise)	- counter-clockwise)

3) How to release the air from the pump.

When pushing the draw-bar down, the fork can't be lifted instantly. Please loosen the Screw (303N) on the pump while pushing the handle down slowly to release the air from the pump. Then tighten the screw.

4) When to add oil

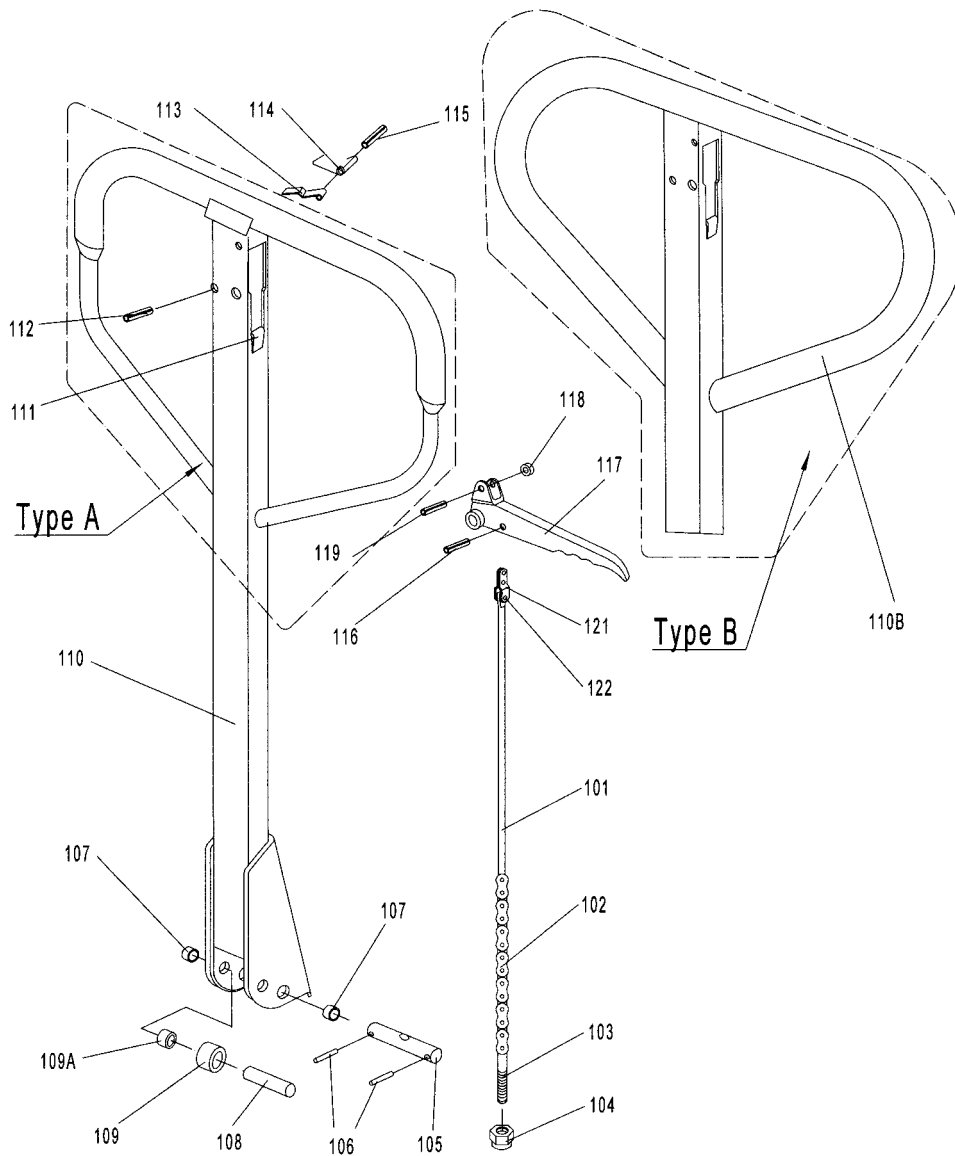
If the fork can't be pumped up to its rated highest position, you may have to add hydraulic oil into the oil tank. The hydraulic fluid to be used must have a quality of ISO VG32 or equivalence, its viscosity should be 32cSt at 40°C. Mixing of different fluids is prohibited!

4 TROUBLE SHOOTING GUIDE

No.	Symptom	Possible cause	Aliments
1	Fork can not be pumped up	1. Low oil level in oil tank. 2. Exist air in the hydraulic system. 3. The adjusting bolt (318) or adjusting nut (104 or D615) is not adjusted properly.	1. Add proper hydraulic oil. 2. Fast operating the handle for several times. Bleed the system. 3. Adjust it (See item 3).
2	Fork can't be released down	1. Fork blocked. 2. The adjusting bolt (318) or adjusting nut (104 or D615) not adjusted properly.	1. Check and remove the block. 2. Adjust it properly.(See item 3)
3	Fork can't be pumped up to rated highest position.	Oil is not enough.	Add hydraulic oil.
4	Fork lifting speed has no difference between position I and position II of control handle.	The adjusting nut (104 or D615) or the adjusting bolt (318) are not adjusted properly.	Adjust it. (See item 3)

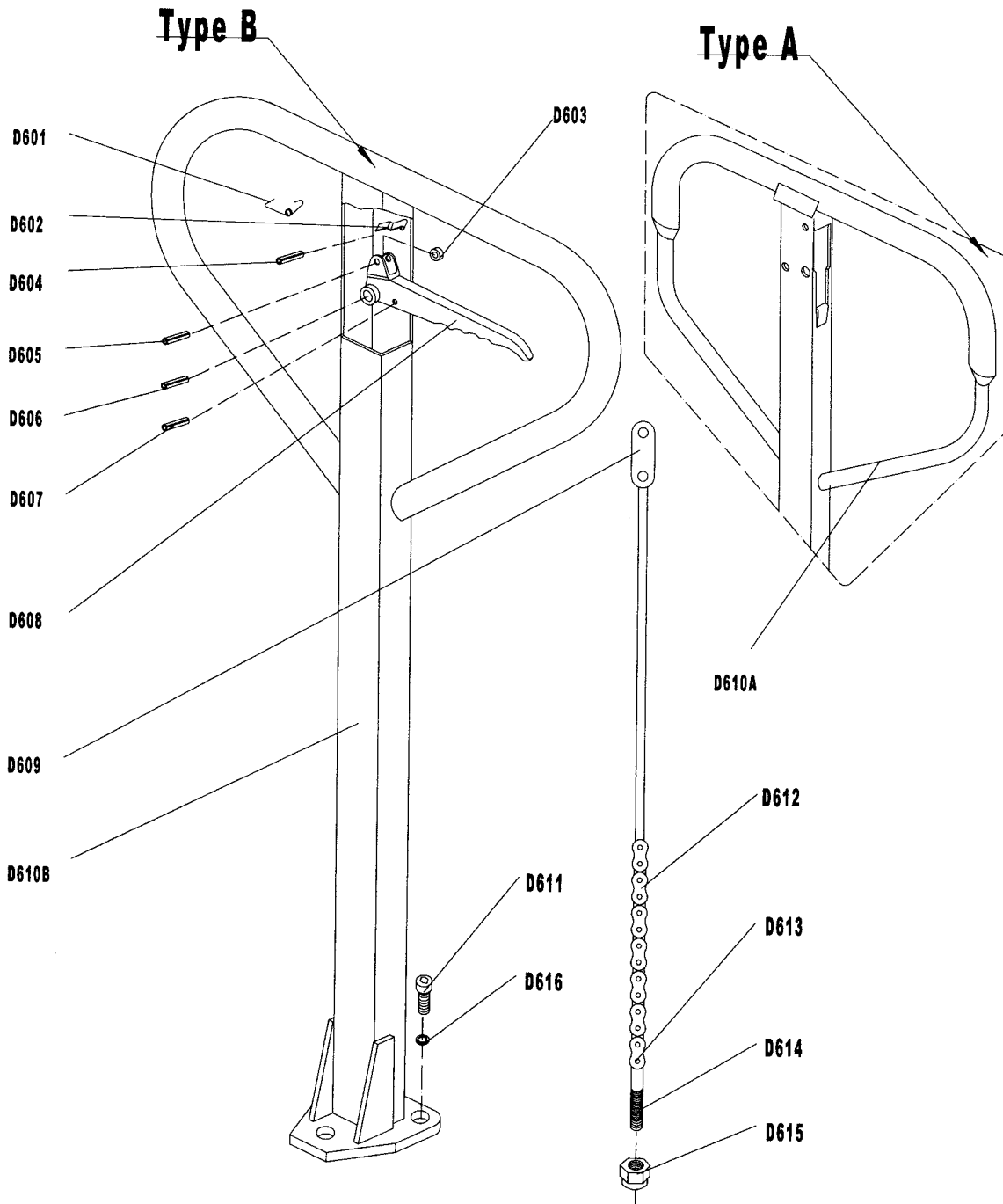
NOTE: DO NOT ATTEMPT TO REPAIR THE PALLET TRUCK UNLESS YOU ARE TRAINED AND AUTHORIZED TO DO SO.

DRAW – BAR for “TYPE I” PUMP

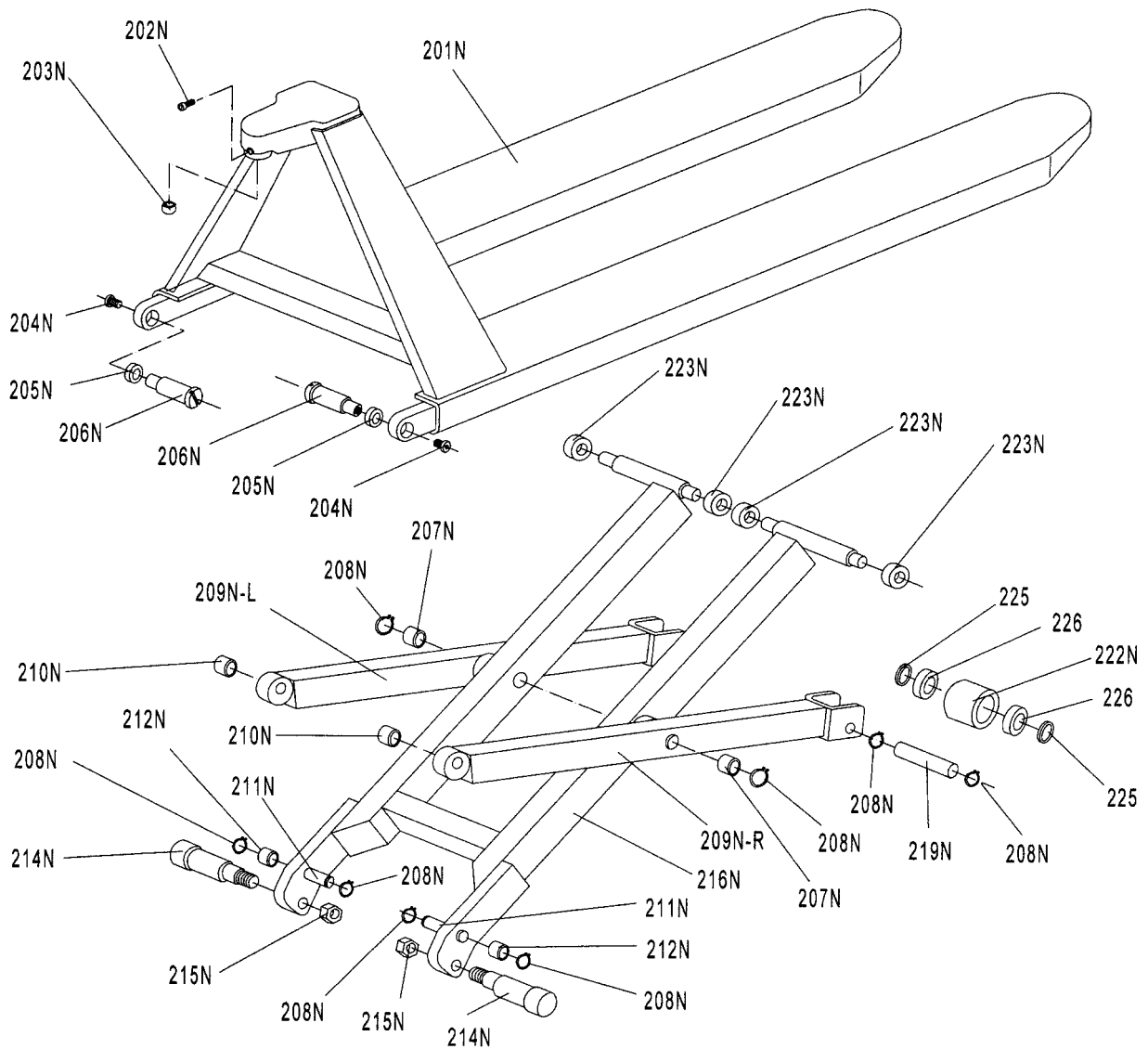


No.	Description	Qty	Remark	No.	Description	Qty	Remark
101	Release Rod	1		112	Elastic Pin	1	
102	Chain	1		113	Blade Spring	1	
103	Adjusting Bolt	1		114	Spring	1	
104	Adjusting Nut	1		115	Elastic Pin	1	
105	Axle with Hole	1		116	Elastic Pin	1	
106	Elastic Pin	2		117	Control Handle	1	
107	Bushing	2		118	Roller	1	
108	Roller Pin	1		119	Elastic Pin	1	
109	Pressure Roller	1		121	Pull Board	1	
109A	Bushing	1		122	Pin	1	
110	Draw-bar	1	For Type A				
110B	Draw-bar	1	For Type B				
111	Stop Rubber	1					

DRAW – BAR for “TYPE II” PUMP

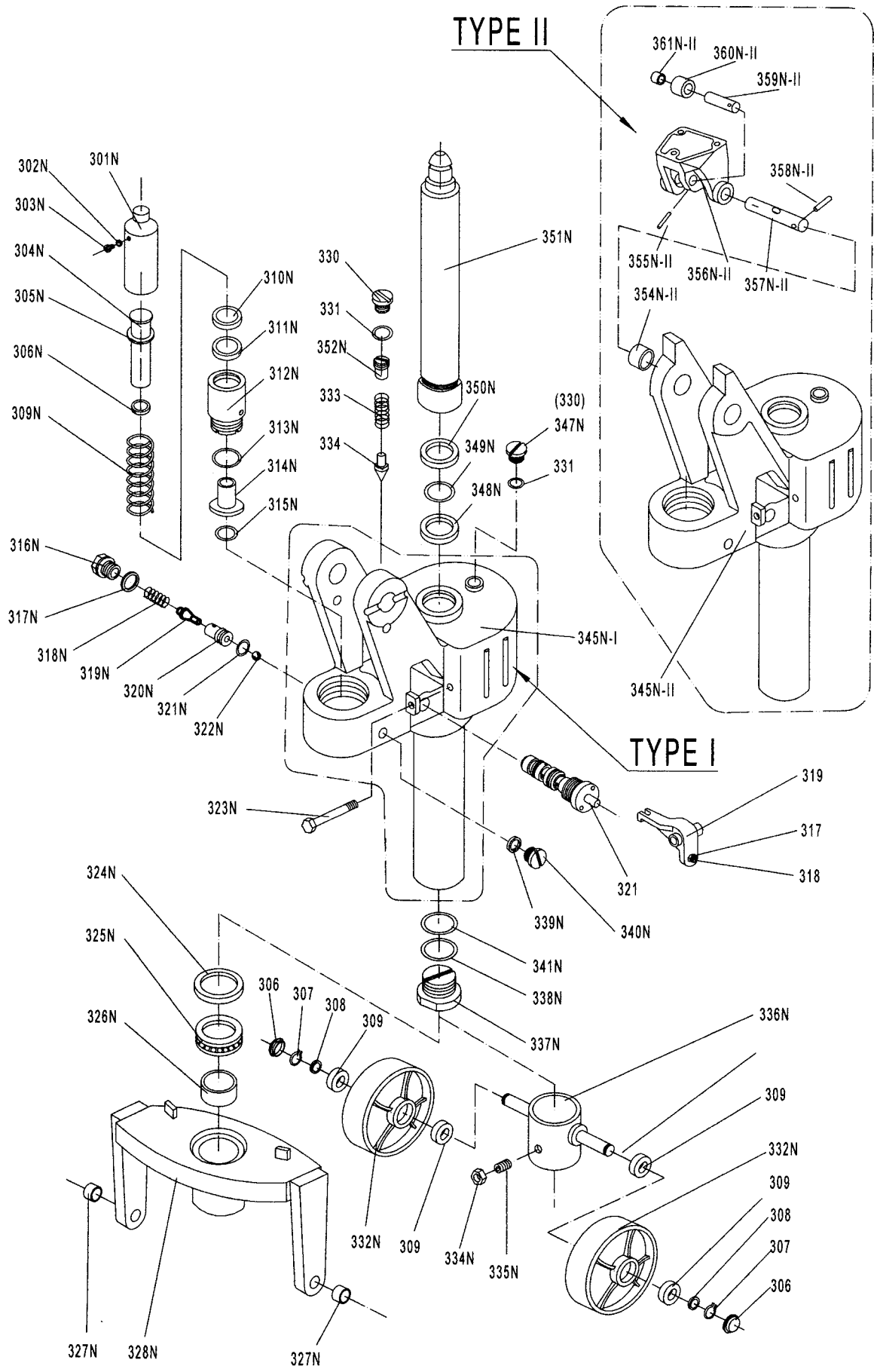


No.	Description	Qty.	Remark	No.	Description	Qty.	Remark
D601	Spring	1		D610B	Handle	1	For Type A
D602	Blade Spring	1		D610A	Handle	1	For Type B
D603	Roller	1		D611	Screw	3	
D604	Elastic Pin	1		D612	Chain	1	
D605	Elastic Pin	1		D613	Pin	1	
D606	Elastic Pin	1		D614	Adjusting Bolt	1	
D607	Elastic Pin	1		D615	Adjusting Nut	1	
D608	Control Handle	1		D616	Elastic Washer	3	
D609	Pull Board	1					



LIST of FRAME

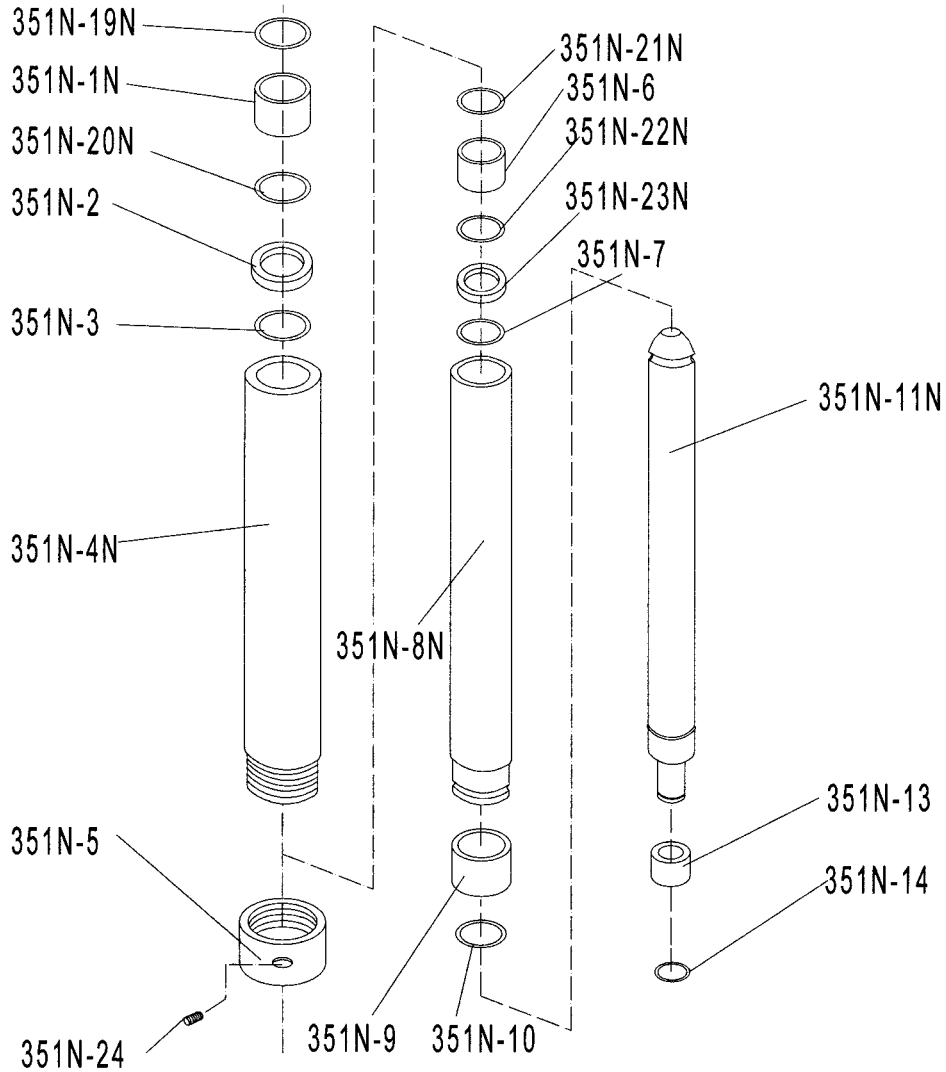
No.	Description	Qty.	Annotations	No.	Description	Qty.	Annotations
225	Washer	4		211N	Pin	2	
226	Bearing	4		212N	Bushing	2	
201N	Fork Frame	1		213N			
202N	Bolt	1		214N	Centrifugal Axle	2	
203N	Sleeve	1		215N	Locking Nut	2	
204N	Screw	2		216N	Inner Leg	1	
205N	Washer	2		217N			
206N	Pin	2		218N			
207N	Bushing	2		219N	Shaft of Roller	2	
208N	Locking Ring	10		220N			
209N-L	Left Leg	1		221N			
209N-R	Right Leg	1		222N	Roller	2	
210N	Bushing	2		223N	Steel Roller	4	



LIST OF PUMP

No.	Description	Qty	Annotations
306	Dust Cover	2	
307	Locking Ring	2	
308	Washer	2	
309	Bearing	4	
317	Nut	1	
318	Screw	1	
319	Lever Plate	1	
321	Valve Cartridge	1	
330	Screw Plug	2	
331	O - Ring	2	
333	Spring	1	
334	Spindle of Safety Valve	1	
301N	Piston for Quick Lifting	1	
302N	Seal Washer	1	
303N	Screw for Deflating	1	
304N	Piston for Slow Lifting	1	
305N	Washer for Spring	1	
306N	Y - Ring	1	
309N	Spring	1	
310N	Dust Ring	1	
311N	Y - Ring	1	
312N	Pump Cylinder for Quick Lifting	1	
313N	O – Ring	1	
314N	Pump Cylinder for Slow Lifting	1	
315N	O - Ring	1	
316N	Screw	1	
317N	Seal Washer	1	
318N	Spring	1	
319N	Spindle of Pump Valve	1	
320N	Seat of Valve	1	
321N	O - Ring	1	
322N	Steel Ball	1	
323N	Bolt	1	
324N	Cover of Bearing	1	
325N	Bearing	1	
326N	Bushing	1	
327N	Bushing	2	
328N	Thrust Plate	1	
332N	Big Wheel	2	
334N	Nut	1	
335N	Screw	1	
336N	Holding Site for Wheel	1	
337N	Bolt	1	
338N	O - Ring	1	
339N	Seal Washer	1	
340N	Screw	1	
341N	Washer	1	
345N-I	Pump Body	1	For TYPE I
345N-II	Pump Body	1	For TYPE II
347N	Exhausting Screw	1	Be replaced
348N	Y - Ring	1	
349N	O - Ring	1	
350N	Dust Ring	1	

No.	Description	Qty	Annotations
351N	Lifting Piston	1	Assembly
352N	Adjusting Bolt	1	
354N-II	Bushing	2	For TYPE II
355N-II	Elastic Pin	1	
356N-II	Bracket	1	
357N-II	Axle with hole	1	
358N-II	Elastic Pin	1	
359N-II	Shaft for Roller	1	
360N-II	Pressure Roller	1	
361N-II	Bushing	1	



No.	Description	Qty.	No.	Description	Qty.
351N-1N	Bushing	1	351N-11N	Piston Rod	1
351N-2	Y - Ring	1	351N-13N	Piston	1
351N-3	Retaining Ring	1	351N-14N	Retaining Ring	1
351N-4N	Outer Piston	1	351N-19N	Retaining Ring	1
351N-5	Screw Cap	1	351N-20N	Nylon Washer	1
351N-6	Bushing	1	351N-21N	Retaining Ring	1
351N-7	Retaining Ring	1	351N-22N	Nylon Washer	1
351N-8N	Middle Piston	1	351N-23N	Y - Ring	1
351N-9	Sleeve	1	351N-24	Screw	1
351N-10	Retaining Ring	1			